

Cellocem® Ultra

DESCRIPTION

NEW VERSION

Cellocem® Ultra is a panel combining graphite expanded polystyrene insulation and a cement board facing, for thermal insulation and mechanical protection of the visible parts of basement walls.

Cellocem® Ultra **is now equipped with a new, stronger, thinner (8 mm) and more cladding plate** for basements. This new cladding board is non combustible, **classified A2-s1, d0**.

FIELD OF USE

Cellocem® Ultra is recommended for thermal **insulation and mechanical protection of the basement wall** of single-family houses, multi-family dwellings and buildings.

REGULATION

Cellocem® Ultra panels must be installed in accordance with the following regulations :

- **NF DTU 20.1** : Smaller masonry units -Walls and partitions
- **CSFE professional recommendations (2010)** : " External thermal insulation of buried walls with waterproofing "
- **CPT 3035 V3** : External thermal insulation systems using plaster on expanded polystyrene
- **DTA** of the waterproof coating

IMPLEMENTATION

Fixing by gluing or mechanical fixing according to the type of supporting wall, as defined by **DTU 20.1**:



THE + PRODUCTS

- New, stronger and more cladding board
- 2 in 1 product: Insulation and mechanical protection in one operation
- Qualified for use in the basement: rot-proof product
- Treats the thermal bridge at the end of the floor
- Guaranteed impact resistance
- Easy to install thanks to the rabbeted edges



Energy saving



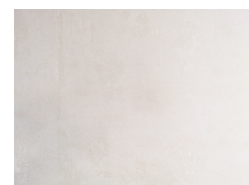
Aesthetics



Thermal insulation



Very high mechanical strength



Cellocem® Ultra

Supporting wall	Type of fixation	Buried part	Visible part
Installation on a waterproofing (category 1, 2 or 3 wall)	Cold bitumen adhesiv	Implementation and accounting according to DTU 20.1 or subject to a favorable opinion in the context of an ATEC	
			In the case of an ETICS cladding: anchoring of mechanical fixings at least 10cm above ground level
laying on the raw wall (category 3 wall without waterproofing)	Cold bitumen adhesiv	5 studs minimum per panel Shoring recommended until backfilling is complete	
	Mechanical fixing	Maximum dowel spacing: 1m with at least 2 fixings per panel Shoring recommended until backfilling is complete	
	Mixed fixing: ETICS adhesive and dowelling	Adhesives with additional mechanical fixing in accordance with the technical agreement to the ETICS system	
			Number of fixings defined by CPT 3035 and CSTB specifications n°3702 and 3707

* In the case of semi-submerged panels, the number of fixings can be calculated in proportion to the surface area remaining visible. If the insulation panel on the base remains visible for several days while waiting for the façade to be insulated: make a continuous adhesive joint between the head and the supporting wall.

PRODUCT CHARACTERISTICS

- **Destination**
foundation
- **Usage**
External insulation of exposed walls
- **Thermal conductivity λ**
0.031 (W/m.K)
- **Width of the CU (*) (m)**
0,6, m
- **Type of insulation**
Expanded Polystyrene (EPS)
- **Code ISOLE**
 - From 20 to 50 mm: 3533(120)2
 - From 55 to 300 mm: 3533(120)3
 - From 305 to 400 mm: 2533(120)3, 3533(120)3, 3533(120)2
- **ACERMI N°**
17/081/1189
- **N° DOP ISOL001-18**
- **Health labelling**
A+

Cellocem® Ultra

CONDITIONING

Name of the article	Cellocem® Ultra 8+40 60/120	Cellocem® Ultra 8+50 60/120	Cellocem® Ultra 8+60 60/120
Sales packaging	Pallet of 50 panels	Pallet of 40 panels	Pallet of 34 panels
CPU thickness (*) (mm)	48	58	68
Thermal resistance	1,25	1,60	1,90

Name of the article	Cellocem® Ultra 8+70 60/120	Cellocem® Ultra 8+80 60/120	Cellocem® Ultra 8+90 60/120
Sales packaging	Pallet of 30 panels	Pallet of 26 panels	Pallet of 24 panels
CPU thickness (*) (mm)	78	88	98
Thermal resistance	2,25	2,55	2,90

Name of the article	Cellocem® Ultra 8+110 60/120	Cellocem® Ultra 8+130 60/120	Cellocem® Ultra 8+150 60/120
Sales packaging	Pallet of 20 panels	Pallet of 16 panels	Pallet of 14 panels
CPU thickness (*) (mm)	118	138	158
Thermal resistance	3,50	4,15	4,80

Name of the article	Cellocem® Ultra 8+175 60/120	Cellocem® Ultra 8+195 60/120	Cellocem® Ultra 8+215 60/120
Sales packaging	Pallet of 12 panels	Pallet of 10 panels	Pallet of 10 panels
CPU thickness (*) (mm)	183	203	223
Thermal resistance	5,60	6,25	6,90

CU: consumer unit
Additional thicknesses can be offered on request



GOOD TO KNOW

PDF documentation

available online at www.hirschisolation.fr :
DOP, ACERMI, Product documentation